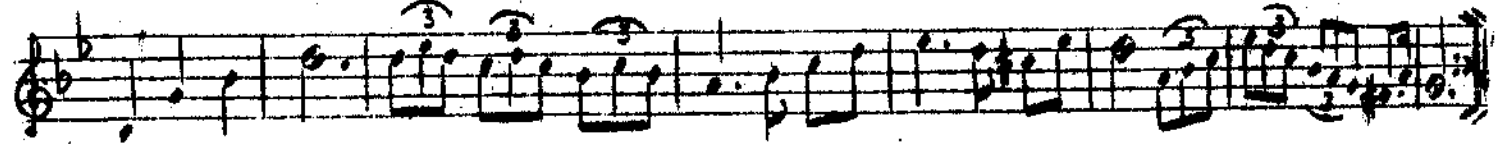


# NIHAVEND ŞARKI

Beste: Civan Ağa  
Güfte: Mehmet Sadi Bey

Semâî  
(Aranağmesi)



Dil se ni sev me ye ni sev



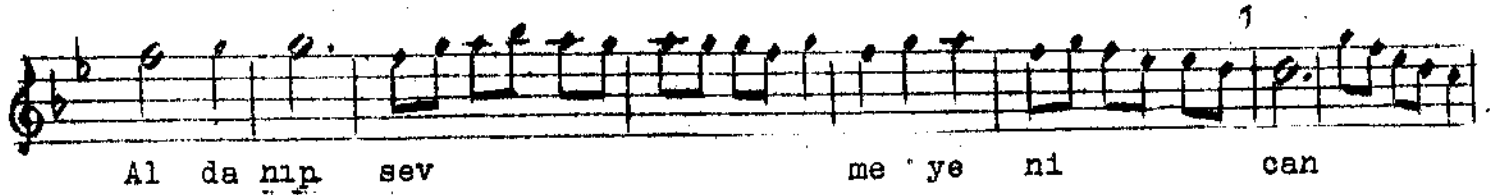
me de lez zet mi o lur --Saz--



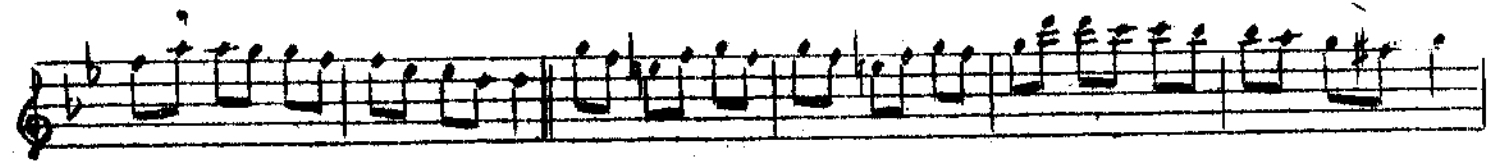
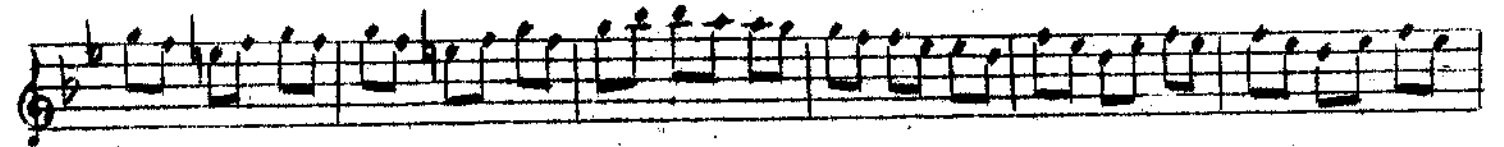
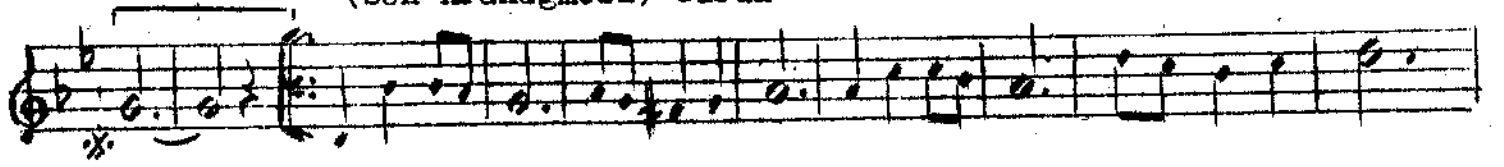
Ol sa da öy he mu hab bet  
Ak li ni ba şı na al her



NİHAVEND ŞARKI (DEVAMI)  
(Dil seni sevmeyeni ...)



(Son Aranağmesi) Yürük



Dil seni sevmeyeni sevmeye lezzet mi olur  
Olse da öyle muhabbetde hakikat mi olur  
Yek-cihet olmaz ise dilde muhabbet mi olur  
Aldanıp sevmeyeni can vererek sevmemeli  
Aklını başına al, herkes için olma deli.